



ARRIFLEX TECHNICAL NOTE P - 1001

LCC and 535B EPROM 1.4

Summary

This note describes a problem and its solution with the LCC "Go To" feature when used with a 535B that has the EPROM 1.4 installed. It also explains the LCC "Go To" feature and how to check the camera EPROM number.

535B EPROM 1.4

The EPROM version 1.4 of the 535B could cause the camera to miscount frames when switching from forward to reverse running. This is only a problem if you use the "Go To" feature of the Laptop Camera Controller (LCC), since the LCC is the only accessory that uses the camera frame counter. It does not affect the operation of the camera in any other way.

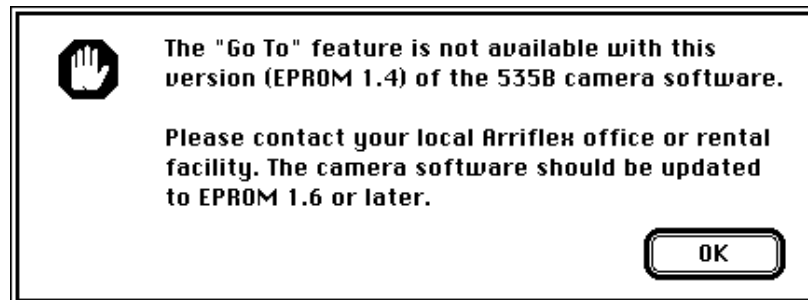
This problem has not been observed with any earlier or later versions of the 535B EPROM.

Effect on LCC 1.2.1 and Earlier

If the LCC version 1.2.1, or earlier version, is used to search for a specific frame ("Go To" feature), it may not be frame accurate when used with the 535B containing the EPROM 1.4. More specifically, it could be off by one frame each time the camera is switched from forward to reverse running.

Effect on LCC 1.3.0

The LCC 1.3.0 will not allow the operator to use the "Go To" feature when connected to a 535B with the EPROM version 1.4. Instead, the following warning will appear:



Solution

Have the Arriflex Service Department in Blauvelt or Burbank replace the 535B EPROM version 1.4 with the latest EPROM version and/or order the upgrade to the LCC version 1.3.0.

What is the LCC "Go To" Feature?

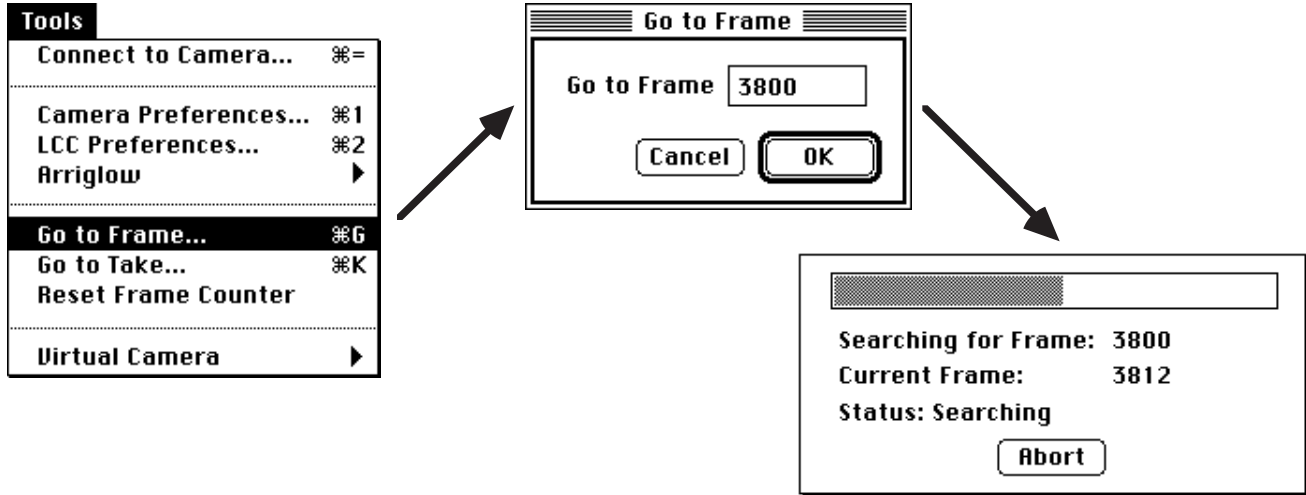
The "Go To" feature is a function unique to the LCC. The new generation Arriflex cameras count each frame that runs through the gate. Using this frame count, the LCC can find any frame by rewinding (running in reverse) or by running the camera forward. The user simply enters the target frame number, and the LCC does the rest. The LCC camera reports can optionally record the in and out frame numbers for each take.

How Can I Check the Camera's EPROM Version?

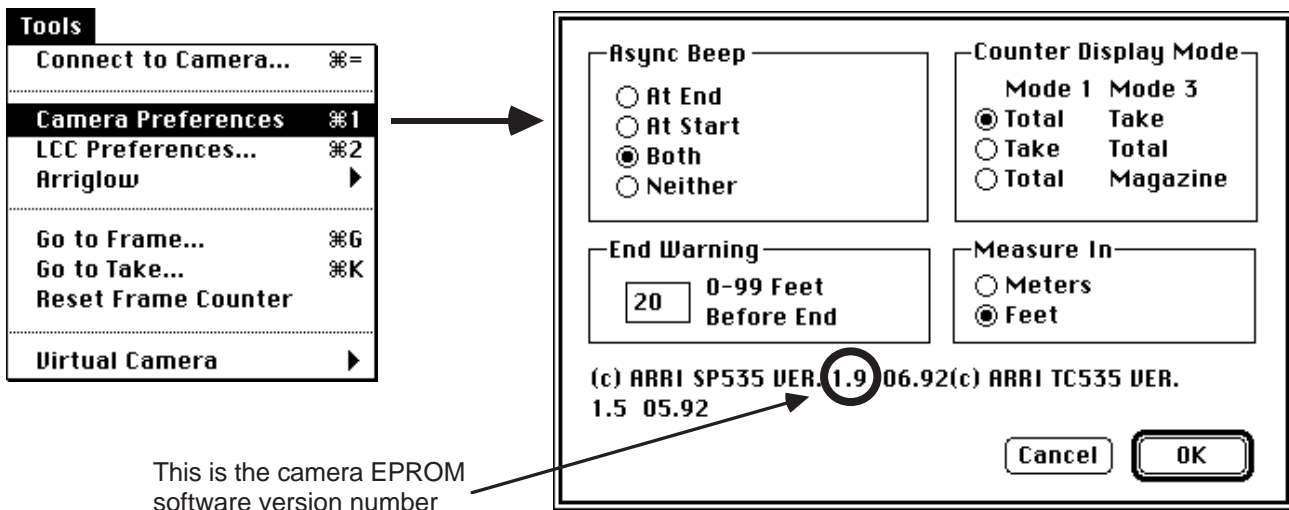
The LCC can check the camera's EPROM version. On the LCC version 1.2.1 or earlier, choose "Camera Preferences" from the "Tools" menu while holding down the "option" key on the keyboard. On the LCC 1.3.0, just choose "Camera Preferences" from the "Tools" menu. The camera's EPROM version will appear in the lower portion of the "Camera Preferences" dialog.

ARRIFLEX TECHNICAL NOTE P - 1001

The LCC "Go To" Feature:



The LCC "Camera Preferences" Dialog:



Article Change History

April 4th, 1997 Article was created.

Keywords

LCC, 535B, Go To, EPROM

For further information regarding this technical note, please contact Marc Shipman-Mueller at
 Tel: (773) 252-8003, Fax: (773) 252-5210, e-mail: MSMueller@arri.com, or
 Arriflex Corp. Customer Service Department: 617 Route 303, Blauvelt, NY 10913-1109, Tel: (914) 353-1400, Fax:
 (914) 425-1250; or 600 N. Victory Blvd., Burbank, CA 91502-1639, Tel: (818) 848-7070, Fax: (818) 848-4028

© Copyright 1997 Arriflex Corporation